

HOUSTON METHODIST J.C. WALTER JR. TRANSPLANT CENTER

Conference Series

AN INAUGURAL SYMPOSIUM AT HOUSTON METHODIST
Redefining the Boundaries of Liver Care

Thursday, December 5
1:00 P.M. – 5:30 P.M.

FIRST ANNUAL WADI SUKI CONFERENCE
Chronic Kidney Disease

Friday, December 6
8:00 A.M. – 5:00 P.M.

FOURTH ANNUAL GEORGE P. NOON CONFERENCE
**Advances in Thoracic Transplantation and
Management of Multi-Organ Failure Patients**

Saturday, December 7
8:00 A.M. – 4:15 P.M.

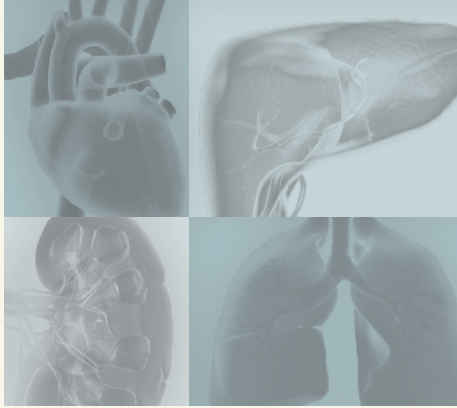
Highlighting 50 Years in Advances in Organ Failure and Transplantation Management and Celebrating Houston Methodist Lung Transplantation Program for Becoming the Largest Lung Program in the Nation

Houston Methodist Research Institute

6670 Bertner Ave.
Houston, TX 77030



HOUSTON
MethodistSM
J.C. WALTER JR.
TRANSPLANT CENTER



HOUSTON METHODIST J.C.WALTER JR. TRANSPLANT CENTER

Conference Series

COURSE DIRECTOR

A. Osama Gaber, M.D., FACS

PLANNING COMMITTEE

Horacio J. Adrogué Sr., M.D.

Jerry D. Estep, M.D., FACC

Joseph S. Galati, M.D., FACG

R. Mark Ghobrial, M.D., Ph.D., FACS,
FRCS(Ed)

Richard J. Knight, M.D., FACS

Matthias Loebe, M.D., Ph.D., FACC

Howard P. Monsour Jr., M.D.

George P. Noon, M.D.

Scott Scheinin, M.D., FACS

Harish Seethamraju, M.D.

Wadi N. Suki, M.D., FACP

Houston Methodist surgeons performed their first kidney transplant in 1963, followed quickly by many firsts in heart, lung, liver and multi-organ transplants. Since then the program has grown tremendously.

The Houston Methodist J.C. Walter Jr. Transplant Center has transplanted more than 4,000 organs, including 462 in 2012, representing a new lease on life for thousands of patients. Houston Methodist outcomes are among the best in the country.

The Houston Methodist J.C. Walter Jr. Transplant Center has led innovative care in the management of organ failure patients.

PROGRAM OVERVIEW

The Houston Methodist J.C. Walter Jr. Transplant Center would like to highlight 50 years in advances in organ failure and transplantation management and celebrate lung transplantation.

Attendees will explore protocol-driven methodologies used to diagnose and treat patients with heart, lung, liver, kidney and pancreas failure. They will gain a greater understanding of liver cancer, prostate cancer and professionalism in medicine.

Another topic to be discussed is the ethics of futility in medical treatment and how this issue is viewed in transplantation. Participants will discuss the challenges of building the largest lung transplant program in the nation and participate in a patient panel to gain understanding from the transplant patient's perspective.

TARGET AUDIENCE

The conference is designed for cardiologists, gastroenterologists, hepatologists, pulmonologists, nephrologists, pathologists, internists, oncologists, family practitioners, nurses, social workers and allied health professionals with an interest in transplant.





AN INAUGURAL SYMPOSIUM AT HOUSTON METHODIST

Redefining the Boundaries of Liver Care

THURSDAY, DECEMBER 5
1:00 – 5:30 P.M.

TARGET AUDIENCE

Nurses, social workers, dialysis technicians, dietitians, physicians and other health care professionals with interest in transplantation.



Thirty million Americans are affected by cirrhosis, hepatitis, liver cancer and other forms of fatty liver disease. With early diagnosis and treatment, many of these people go on to lead healthy, active lives. In the next decade, the leading cause for liver transplantation will be nonalcoholic fatty liver disease as a result of the obesity epidemic that affects America. Liver cancer will rise to the second leading cause, while hepatitis C will fall to third or fourth as a result of innovative treatments. Collaboration across disciplines, including anesthesia, surgical ICU and research, is important to comprehensive and improved care for patients.



FIRST ANNUAL WADI SUKI CONFERENCE

Chronic Kidney Disease

FRIDAY, DECEMBER 6
8:00 A.M. – 5:00 P.M.

TARGET AUDIENCE

Nurses, social workers, dialysis technicians, dietitians, physicians and other health care professionals with interest in transplantation.



Chronic kidney disease is quickly rising to the status of a national epidemic. Understanding chronic kidney disease and end-stage renal failure is critical to patients with diabetes or hypertension and to elderly patients, as well as their health care providers. Awareness of chronic kidney disease is the best prevention measure. Recent advances in diagnosis and early treatment promise to change the course of disease progression. Recognition of patients at risk of advanced renal insufficiency and appropriate referral to kidney failure specialists both result in better outcomes for the patient, both in dialysis and transplantation.



FOURTH ANNUAL GEORGE P. NOON CONFERENCE

Advances in Thoracic Transplantation and Management of Multi-Organ Failure Patients

SATURDAY, DECEMBER 7
8:00 A.M. – 4:15 P.M.

TARGET AUDIENCE

Cardiologists, pulmonologists, nephrologists, hepatologists, oncologists, gastroenterologists, internists, pathologists, family practitioners, nurses, social workers, dialysis technicians, dietitians and other health care professionals with interest in transplantation.



Since the pioneering work of Dr. Michael DeBakey, heart transplantation and left ventricular assist devices have been a major area of excellence for Houston Methodist. With the expansion of lung transplantation and the establishment of new protocols for management of patients with pulmonary failure, the Methodist team is charting new waters in the care of this major focus of the Noon conference. Attendees will also explore cutting-edge technology, pharmacology, as well as protocol-driven methodologies used to diagnose and treat patients with heart, lung, liver, kidney and pancreas failure.



Agenda | December 5

AN INAUGURAL SYMPOSIUM AT HOUSTON METHODIST

Redefining the Boundaries of Liver Care

PROGRAM OVERVIEW

Thirty million Americans are affected by cirrhosis, hepatitis, liver cancer and other forms of fatty liver disease. With early diagnosis and treatment, many of these people go on to lead healthy, active lives. In the next decade, the leading cause for liver transplantation will be nonalcoholic fatty liver disease as a result of the obesity epidemic that affects America. Liver cancer will rise to the second leading cause, while hepatitis C will fall to third or fourth as a result of innovative treatments. Collaboration across disciplines, including anesthesia, surgical ICU and research, is important to comprehensive and improved care for patients.

TARGET AUDIENCE

Nurses, social workers, dialysis technicians, dietitians, physicians and other health care professionals with interest in transplantation.

12:00 P.M.	Lunch
1:00	Introduction <i>A. Osama Gaber, M.D., FACS</i>
1:15	Liver Disease: The Challenge <i>John R. Lake, M.D.</i>
2:15	Nonalcoholic Steatohepatitis <i>Howard P. Monsour Jr., M.D.</i>
3:00	Metabolism and the Liver <i>Willa A. Hsueh, M.D.</i>
3:30	Break
3:45	HCV Management: New Horizons <i>Robert McFadden, M.D.</i>
4:15	Hot Topics Debate: Resection or Transplantation for Hepatocellular Carcinoma <i>Jean-Nicolas Vauthey, M.D.</i>
4:45	Liver Cancer and Transplantation <i>R. Mark Ghobrial, M.D., Ph.D., FACS, FRCS(Ed)</i>
5:15	Rebuttals
5:30	Adjourn

COURSE DIRECTOR

A. Osama Gaber, M.D., FACS

*Methodist J.C. Walter Jr. Distinguished Endowed Chair
Director, Methodist J.C. Walter Jr. Transplant Center
Professor of Surgery, Weill Cornell Medical College
Vice Chair, Administration & Faculty Affairs
Department of Surgery
Houston Methodist*

FACULTY

R. Mark Ghobrial, M.D., Ph.D., FACS, FRCS(Ed)

*Director, Methodist Center for Liver Disease
and Transplantation
Chief, Liver Transplantation Surgery
Director, Immunobiology Research Center
Houston Methodist J.C. Walter Jr. Transplant Center
Professor of Surgery
Weill Cornell Medical College*

Willa A. Hsueh, M.D.

*Senior Member, Houston Methodist Research Institute
Director, Methodist Diabetes and Metabolism Institute
Head Section, Division of Diabetes, Obesity, and Lipids
Department of Medicine
Houston Methodist*

John R. Lake, M.D.

*Professor of Surgery & Medicine
Director, Liver Transplant Program
Executive Medical Director of Solid Organ Transplantation
University of Minnesota*

Robert McFadden, M.D.

*Hepatology and Transplant Medicine
Department of Medicine
Houston Methodist Hospital*

Howard P. Monsour Jr., M.D.

*Associate Professor of Clinical Medicine
Weill Cornell Medical College
Chief, Section of Hepatology
Hepatology and Transplant Medicine
Department of Medicine
Houston Methodist Hospital*

Jean-Nicolas Vauthey, M.D.

*Professor, Department of Surgical Oncology
Division of Surgery
Chief, Liver Service
Department of Surgical Oncology
Bessie McGoldrick Professor in Clinical Cancer Research
Department of Surgical Oncology
Division of Surgery
The University of Texas MD Anderson Cancer Center*

ACCREDITATION AND CREDIT DESIGNATION STATEMENTS

Physicians

Houston Methodist® is accredited by the Accreditation Council for Continuing Medical Education to provide continuing medical education for physicians.

Houston Methodist® designates this live activity for a maximum of 4.0 AMA PRA Category 1 Credits™. Physicians should claim only the credit commensurate with the extent of their participation in the activity.

Dietitians

Continuing professional education credits have been applied for through the Commission on Dietetic Registration, the credentialing agency for the American Dietetic Association.

Social Workers

CEUs for social workers have been applied for with the Case Management and Social Work Department of Houston Methodist.

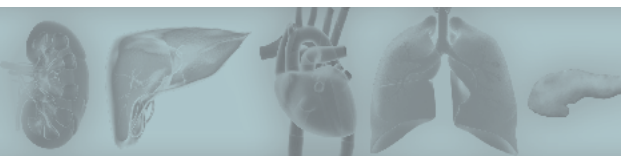
Nurses

The Methodist Hospital System® is an approved provider of continuing nursing education by the Texas Nurses Association, an accredited approver by the American Nurses Credentialing Center's Commission on Accreditation.

The Methodist Hospital System® provides up to 4.0 contact hours for this activity. Participants must attend selected sessions in their entirety and complete the corresponding items on the evaluation tool.

Transplant Coordinators

Category I Continuing Education Points for Transplant Certification (CEPTCs) have been applied for through the American Board for Transplant Certification (ABTC).



FIRST ANNUAL WADI SUKI CONFERENCE

Chronic Kidney Disease

PROGRAM OVERVIEW

Chronic kidney disease is quickly rising to the status of a national epidemic. Understanding chronic kidney disease and end-stage renal failure is critical to patients with diabetes or hypertension and to elderly patients, as well as their health care providers. Awareness of chronic kidney disease is the best prevention measure. Recent advances in diagnosis and early treatment promise to change the course of disease progression. Recognition of patients at risk of advanced renal insufficiency and appropriate referral to kidney failure specialists both result in better outcomes for the patient, both in dialysis and transplantation.

TARGET AUDIENCE

Nurses, social workers, dialysis technicians, dietitians, physicians and other health care professionals with interest in transplantation.

houstonmethodist.org/gpnoon

Agenda | December 6

- 7:00 A.M. Sign-in and Breakfast
- 8:00 **Executive Welcome**
David P. Bernard
Vice President, Houston Methodist
- 8:10 **Dedication**
A. Osama Gaber, M.D., FACS
- 8:20 **Phosphorus: A Predictor of Morbidity and Mortality**
Wadi N. Suki, M.D., FACP
- 8:55 **FRONTIERS IN RENAL CARE LECTURE**
Acute Kidney Injury as a Leading Cause of CKD Acceleration to ESRD
Bruce A. Molitoris, M.D., FASN
- 9:30 Break
- 9:45 **Pathogenesis of Hypertension**
Horacio J. Adrogué Sr., M.D.
- 10:20 **Focus on Lupus Nephritis: Clinical Aspects, Diagnosis and Treatment of Lupus**
George M. Nassar, M.D., FASN
- 10:55 **Histology and Histopathology of Lupus Nephritis**
Lillian W. Gaber, M.D.
- 11:30 **METHODIST INTERNATIONAL INVITED LEADERSHIP**
Kidney Transplantation Across HLA and ABO Barriers: A Road Map
Khalid Al Meshari, M.D., FACP
- 12:05 P.M. Lunch
- THE GRAHAM GUERRIERO SYMPOSIUM: UROLOGICAL DISEASES & TRANSPLANTATION**
- 12:50 **Part 1: Professionalism in Medicine**
Timothy B. Boone, M.D., Ph.D.
- 1:25 **Part 2: Prostate Cancer**
Stuart M. Flechner, M.D.
- PREPARING FOR RENAL FAILURE**
- 2:00 **Fistula First**
Hosam F. El Sayed, M.D., Ph.D., RVT
- 2:35 **Transplant Trumps**
Richard J. Knight, M.D.
- 3:10 Break
- PATIENT PANEL**
- 3:25 **Altruistic Experience**
- 3:55 **Wait List**
- 4:10 **How I Survived Kidney Disease**
- 4:25 **How I Ran Away from Dialysis**
- 5:00 Adjourn

COURSE DIRECTOR

A. Osama Gaber, M.D., FACS

*Methodist J.C. Walter Jr. Distinguished Endowed Chair
Director, Methodist J.C. Walter Jr. Transplant Center
Professor of Surgery, Weill Cornell Medical College
Vice Chair, Administration & Faculty Affairs
Department of Surgery
Houston Methodist*

FACULTY

Horacio J. Adrogué Sr., M.D.

*Professor
Department of Medicine, Section of Nephrology
Medical Director of Dialysis & Transplantation
Houston Methodist*

Khalid Al Meshari, M.D., FACP

*Chairman of the Department of Kidney and Pancreas
Transplantation
Acting Section Head of Immunology
Department of Pathology and Laboratory Medicine
King Faisal Specialist Hospital and Research Center
Riyadh, Kingdom of Saudi Arabia*

David P. Bernard

Vice President, Houston Methodist

Timothy B. Boone, M.D., Ph.D.

*Senior Member, Houston Methodist Research Institute
Co-Director, Institute for Academic Medicine
Chairman, Department of Urology
Houston Methodist
Professor of Urology, Weill Cornell Medical College
Clinical Professor of Urology
Scott Department of Urology
Baylor College of Medicine*

ACCREDITATION AND CREDIT DESIGNATION STATEMENTS

Physicians

Houston Methodist® is accredited by the Accreditation Council for Continuing Medical Education to provide continuing medical education for physicians.

Houston Methodist® designates this live activity for a maximum of 7.50 AMA PRA Category 1 Credits™. Physicians should claim only the credit commensurate with the extent of their participation in the activity.

Houston Methodist® designates this activity for .5 hours of education in medical ethics and/or professional responsibility.

Dietitians

Continuing professional education credits have been applied for through the Commission on Dietetic Registration, the credentialing agency for the American Dietetic Association.

Hosam F. El Sayed, M.D., Ph.D., RVT

*Assistant Professor
Division of Vascular Surgery
Methodist DeBakey Heart & Vascular Center
Weill Cornell Medical College
Houston Methodist*

Stuart M. Flechner, M.D.

*Professor of Surgery
Associate Professor of Renal Transplant
Cleveland Clinic Lerner College of Medicine
Cleveland, Ohio*

Lillian W. Gaber, M.D.

*Professor of Pathology and Laboratory Medicine
Weill Cornell Medical College
Department of Pathology and Genomic Medicine
Houston Methodist Physician Organization*

Richard J. Knight, M.D.

*Surgical Director, Kidney and Pancreas Transplantation
Houston Methodist
Professor of Surgery
Weill Cornell Medical College*

Bruce A. Molitoris, M.D., FASN

*Professor of Medicine
Director, Indiana Center for Biological Microscopy
Foreign Adjunct Professor
Karolinska Institute*

George M. Nassar, M.D., FASN

*Clinical Associate Professor of Medicine
Weill Cornell Medical College
Houston Methodist*

Wadi N. Suki, M.D., FACP

*Clinical Professor of Medicine
Baylor College of Medicine
Director, Nephrology Training Program
Houston Methodist*

Social Workers

CEUs for social workers have been applied for with the Case Management and Social Work Department of Houston Methodist.

Nurses

The Methodist Hospital System® is an approved provider of continuing nursing education by the Texas Nurses Association, an accredited approver by the American Nurses Credentialing Center's Commission on Accreditation.

The Methodist Hospital System® provides up to 7.50 contact hours for this activity. Participants must attend selected sessions in their entirety and complete the corresponding items on the evaluation tool.

Transplant Coordinators

Category I Continuing Education Points for Transplant Certification (CEPTCs) have been applied for through the American Board for Transplant Certification (ABTC).



Agenda | December 7

FOURTH ANNUAL GEORGE P. NOON CONFERENCE

Advances in Thoracic Transplantation and Management of Multi-Organ Failure Patients

PROGRAM OVERVIEW

This conference provides a look into the past and future of the field of transplantation. Attendees will explore cutting-edge technology, pharmacology and protocol-driven methodologies used to diagnose and treat patients with heart, lung, liver, kidney and pancreas failure. Participants will gain a greater understanding in the advances of transplantation and new techniques for minimizing chronic rejection and optimizing outcomes in post-transplant care.

TARGET AUDIENCE

Nephrologists, hepatologists, oncologists, gastroenterologists, cardiologists, internists, pulmonologists, family practitioners, pathologists, nurses, social workers, dialysis technicians, dietitians and other health care professionals with interest in transplantation.

houstonmethodist.org/gpnoon

- 7:00 A.M. Sign-in and Breakfast
- 8:00 **Introduction**
A. Osama Gaber, M.D., FACS
- 8:05 **STATE-OF-THE-ART LECTURE**
Adaptive and Maladaptive Repair After Acute Kidney Injury
Joseph V. Boneventre, M.D., Ph.D.
- 8:55 **TRANSPLANTATIONAL RESEARCH LECTURE**
Genetic Profiling in Transplant
Daniel R. Salomon, M.D.
- 9:45 Break
- 10:00 **Heart Mitochondria**
Dale J. Hamilton, M.D.
- 10:50 **Tailoring Therapy for the Advanced Heart Failure Patient**
Joseph G. Rogers, M.D., FACC
- 11:40 Lunch
- 12:40 P.M. **Humoral Alloimmune and Autoimmune Responses in Lung Transplantation**
Ramsey Hachem, M.D.
- 1:30 **Medical Futility & Using Ethically-Appropriate Communication Strategies to “Nudge” Patients/Surrogates**
Courtenay R. Bruce, J.D., M.A.
- 2:20 Break
- 2:35 **Philosophy of Quality**
Alan Langnas, D.O.
- 3:25 **Mechanical Support for the Failing Heart: Cost, Reimbursement and Future Implications**
Dennis Irwin, M.D.
- 4:15 Adjourn

COURSE DIRECTOR

A. Osama Gaber, M.D., FACS

*Methodist J.C. Walter Jr. Distinguished Endowed Chair
Director, Methodist J.C. Walter Jr. Transplant Center
Professor of Surgery, Weill Cornell Medical College
Vice Chair, Administration & Faculty Affairs
Department of Surgery
Houston Methodist*

FACULTY

Joseph V. Boneventre, M.D., Ph.D.

*Chief, Renal Division
Professor, Harvard Medical School
Former President, American Society of Nephrology (ASN)*

Courtenay R. Bruce, J.D., M.A.

*Assistant Professor of Medicine and Medical Ethics
Center for Medical Ethics and Health Policy
Baylor College of Medicine
Director, Houston Methodist Hospital Ethics Program
Co-Director, The Methodist Hospital System
Ethics Program*

Ramsey Hachem, M.D.

*Internal Medicine/Pulmonary and Critical Care
Washington University School of Medicine at St. Louis
Associate Professor, Medicine
Division of Pulmonary and Critical Care Medicine*

Dale J. Hamilton, M.D.

*Director, Bioenergetics Lab
Houston Methodist Research Institute
Interim Head, Endocrinology Division
Houston Methodist
Associate Professor of Clinical Medicine
Weill Cornell Medical College*

Dennis Irwin, M.D.

*National Medical Director, Transplantation & VAD
Complex Medical Conditions*

Alan Langnas, D.O.

*Chief, Section of Transplantation
Professor of Surgery
University of Nebraska Medical Center
Director, Nebraska Center for Transplantation
Program Director, Transplantation Surgery Fellowship
Director, Liver Transplantation
Director of Intestinal Transplantation
The Nebraska Medical Center*

Joseph G. Rogers, M.D.

*Associate Professor of Medicine
Senior Vice Chief for Clinical Affairs
Division of Cardiology
Medical Director, Duke Cardiac Transplant
and Mechanical Circulatory Support Program
Duke University Medical Center*

Daniel R. Salomon, M.D.

*Professor
Department of Molecular and Experimental Medicine
Program Medical Director
Scripps Center for Organ and Cell Transplantation
President, American Society of Transplantation (AST)*

ACCREDITATION AND CREDIT DESIGNATION STATEMENTS

Physicians

Houston Methodist® is accredited by the Accreditation Council for Continuing Medical Education to provide continuing medical education for physicians.

Houston Methodist® designates this live activity for a maximum of 6.75 AMA PRA Category 1 Credits™. Physicians should claim only the credit commensurate with the extent of their participation in the activity.

Houston Methodist® designates this activity for .75 hours of education in medical ethics and/or professional responsibility.

Dietitians

Continuing professional education credits have been applied for through the Commission on Dietetic Registration, the credentialing agency for the American Dietetic Association.

Social Workers

CEUs for social workers have been applied for with the Case Management and Social Work Department of Houston Methodist.

Nurses

The Methodist Hospital System® is an approved provider of continuing nursing education by the Texas Nurses Association, an accredited approver by the American Nurses Credentialing Center's Commission on Accreditation.

The Methodist Hospital System® provides up to 6.75 contact hours for this activity. Participants must attend selected sessions in their entirety and complete the corresponding items on the evaluation tool.

Transplant Coordinators

Category I Continuing Education Points for Transplant Certification (CEPTCs) have been applied for through the American Board for Transplant Certification (ABTC).

HOUSTON METHODIST J.C. WALTER JR. TRANSPLANT CENTER

Conference Series

Target Audience

The conference is designed for cardiologists, pulmonologists, nephrologists, hepatologists, oncologists, gastroenterologists, internists, pathologists, family practitioners, nurses, social workers and allied health professionals with an interest in transplant.

Educational Objectives

Upon completion of this course, the participant should be able to

- Assess genetic profiling in transplant and review heart failure and heart mitochondria;
- Deliberate ethical issues regarding futility in medical treatment;
- Discuss the leading causes for liver transplantation and treatment strategies for these diseases;
- Identify current clinical aspects and treatment of lupus and review the histology and histopathology of lupus nephritis; and
- Review the challenges in lung transplant and building a large program.

Educational Methods

Didactic Lectures, Case Studies

Evaluation

Evaluation via an online questionnaire will address program content, presentation and possible bias.

Accreditation and Credit Designation Statements

Physicians

Houston Methodist® is accredited by the Accreditation Council for Continuing Medical Education to provide continuing medical education for physicians.

Houston Methodist® designates this live activity for a maximum of 18.25 *AMA PRA Category 1 Credits™*. Physicians should claim only the credit commensurate with the extent of their participation in the activity.

Nurses

The Methodist Hospital System® is an approved provider of continuing nursing education by the Texas Nurses Association, an accredited approver by the American Nurses Credentialing Center's Commission on Accreditation.

The Methodist Hospital System® provides up to 18.25 contact hours for this activity. Participants must attend selected sessions in their entirety and complete the corresponding items on the evaluation tool.

Houston Methodist® designates this activity for 1.25 hours of education in medical ethics and/or professional responsibility.

Dietitians

Continuing professional education credits have been applied for through the Commission on Dietetic Registration, the credentialing agency for the American Dietetic Association.

Social Workers

CEUs for social workers have been applied for with the Case Management and Social Work Department of Houston Methodist.

Transplant Coordinators

Category I Continuing Education Points for Transplant Certification (CEPTCs) have been applied for through the American Board for Transplant Certification (ABTC).

Disclosure

This CME activity is designed for use by health care professionals for educational purposes only. Information and opinions offered by the contributors represent their viewpoints. Conclusions drawn by the participant should be derived from careful consideration of all available scientific information. Prescription information and use of medical devices should be undertaken only after confirmation of information by consulting the FDA-approved uses and information.

Houston Methodist makes every effort to have accurate information presented; no warranty, expressed or implied, is offered. The participant should use his/her clinical judgment, knowledge, experience and diagnostic decision-making before applying any information, whether provided here or by others, for any professional use.

ADA Statement

In compliance with the Americans with Disabilities Act, Houston Methodist will make reasonable efforts to accommodate persons with disabilities at this symposium. Please call 713.441.2153 for further information, or if you need special assistance.

Fees, Registration and Conference Information

Refer to the registration form for the fee schedule. Your registration will not be processed until payment is received. Your registration will be confirmed. If you have not received confirmation at least five business days before the activity start date, contact the Office of Continuing Medical Education (OCME) immediately.

If you plan to register on-site, contact OCME at least 24 hours in advance to confirm activity status and space availability. The OCME reserves the right to limit the number of participants in an activity and will not be responsible for any expenses incurred by an individual whose registration is not confirmed and for whom space is not available.

Cancellation/Refund Policy

Requests for registration refunds must be in writing and received by the OCME at least 10 business days before the course begins. The date the request is received by the OCME will be considered the cancellation date. Requests received after the refund deadline will not be processed. Cancellations are subject to a \$50 administrative fee deducted from the registration fee paid to cover guarantees and other expenses. Requests should be mailed to the OCME or faxed to 713.441.0589.

The OCME reserves the right to cancel activities, not less than 10 business days before the scheduled date, if extenuating circumstances make it necessary. Registrants will be notified at the contact number indicated on the registration form followed by written notification. If an activity is cancelled, OCME's liability is limited to the registration fee paid. Note: If payment is made by check, a social security number is required to process the refund.

For Further Information Contact

Houston Methodist

Office of Continuing Medical Education

6565 Fannin St., MGJ9-004 | Houston, TX 77030

Phone: 713.441.4971 | Fax: 713.441.0589

Email: cme@houstonmethodist.org



Registration

THREE WAYS TO REGISTER

Online: houstonmethodist.org/gpnoon

Fax: 713.441.0589

Mail: Houston Methodist
Office of Continuing Medical Education
Attn: Transplant (#224)
6565 Fannin, MGJ9-004
Houston, TX 77030

Do **not** include me in future mailing lists

Please print clearly

Last Name: _____ First Name: _____ Credentials: _____

Organization: _____

Specialty: _____

Title/Position: _____

Address: _____

City: _____ State: _____ ZIP: _____

Office Phone: _____ Office Fax: _____

Email: _____

Check or Money Order (made payable in U.S. funds to *Houston Methodist*)

Credit Card: *I authorize Houston Methodist to charge my:* Visa® MasterCard® AMEX®

Credit Card No. _____ Exp. Date: _____

Name on the Card: _____

Authorized Signature: _____

Special dietary needs (specify): _____

CONFERENCE LOCATION

Houston Methodist Research Institute
2nd Floor Auditorium | 6670 Bertner Ave.
Houston, TX 77030

NEARBY ACCOMMODATIONS

Houston Marriott at the Texas Medical Center
6580 Fannin St. | Houston, TX 77030
713.796.0080

RESERVATIONS: Please identify yourself with the *Houston Methodist J.C. Walter Jr. Transplant Center Conference Series* when making reservations in order to get the special group rate (\$115 single/double). A limited number of rooms have been reserved at this rate on a space available basis. The deadline is **Thursday, November 14, 2013**, to receive this rate unless the room block has already been filled. **RESERVE YOUR ROOM EARLY.**

For information about other Houston Methodist CME activities, visit houstonmethodist.org/cme.

PAYMENT AND FEES

Physician

- Dec. 5: Redefining the Boundaries of Liver Care\$90
- Dec. 6: Chronic Kidney Disease.....\$180
- Dec. 7: Transplantation & Multi-Organ Failure.....\$165

TOTAL \$ _____

Other Health Care Professional

- Dec. 5: Redefining the Boundaries of Liver Care\$25
- Dec. 6: Chronic Kidney Disease.....\$50
- Dec. 7: Transplantation & Multi-Organ Failure.....\$50

TOTAL \$ _____

Resident/Fellow*

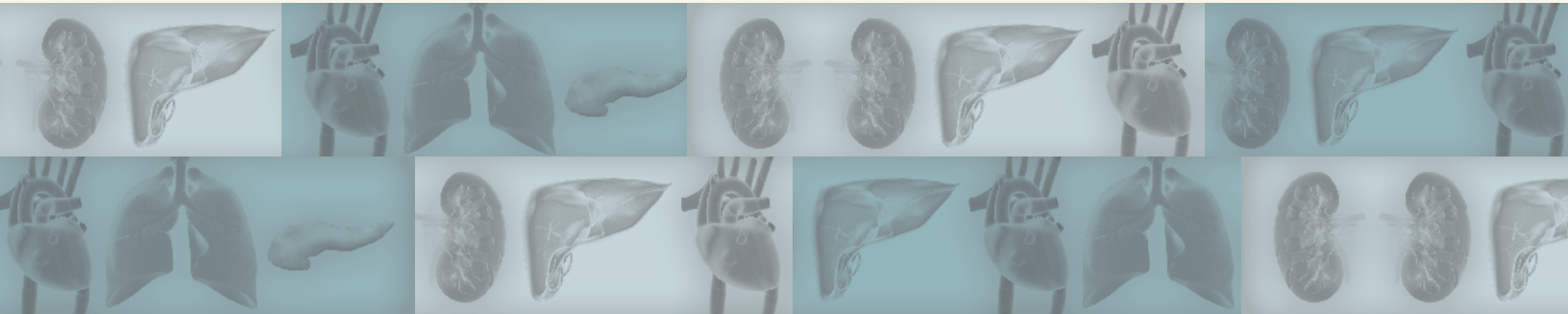
- Dec. 5: Redefining the Boundaries/Liver Care.....No fee
- Dec. 6: Chronic Kidney Disease.....No fee
- Dec. 7: Transplantation & Multi-Organ Failure.....No fee

*Verification is required. Please call the Houston Methodist Office of Continuing Medical Education at 713.441.4971.

The Methodist Hospital

6565 Fannin St.
Houston, TX 77030

Nonprofit Org.
U.S. Postage
PAID
Permit No. 6311
Houston, TX



HOUSTON METHODIST J.C. WALTER JR. TRANSPLANT CENTER

Conference Series

Highlighting 50 Years in Advances in Organ Failure and Transplantation Management
and Celebrating Houston Methodist Lung Transplantation Program
for Becoming the Largest Lung Program in the Nation

Houston Methodist Research Institute

6670 Bertner Ave.
Houston, TX 77030



HOUSTON
MethodistSM
J.C. WALTER JR.
TRANSPLANT CENTER